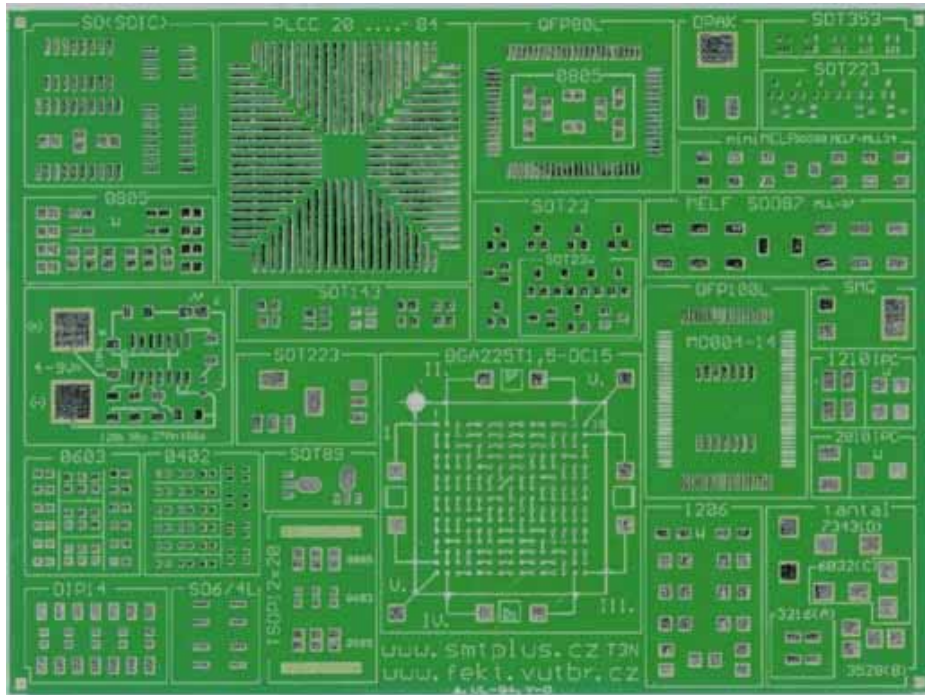


Training and Testing PCB Board

Dimensions of the board are 130x98mm, thickness 1.5mm. Board is made from F4 material equivalent (UMATEXT222). On this board are located footprints for all basic SMD packages. You can realize on it also generator 1sec. impulses for driving LED diode.



On the testing board are located footprints of SMD packages:

- PLCC 20-84, QFP80, QFP100, BGA 225, MO004-14, TSOP 12x20, SO4-8, SOL4-20, DIP14, SO6/4, DPAK, SOT23, SOT353, SOT223, SO143, SOT89, 3216(A), 3528(B), 6032(C), 7343(D), miniMELF, MELF, SOD80, SOD87, 0402, 0603, 0805, 1206, 1210, 2010, SMQ
- On the board is located also daisy chain footprint for testing package BGA225-1,5. Footprint is compatible with motif DC15.